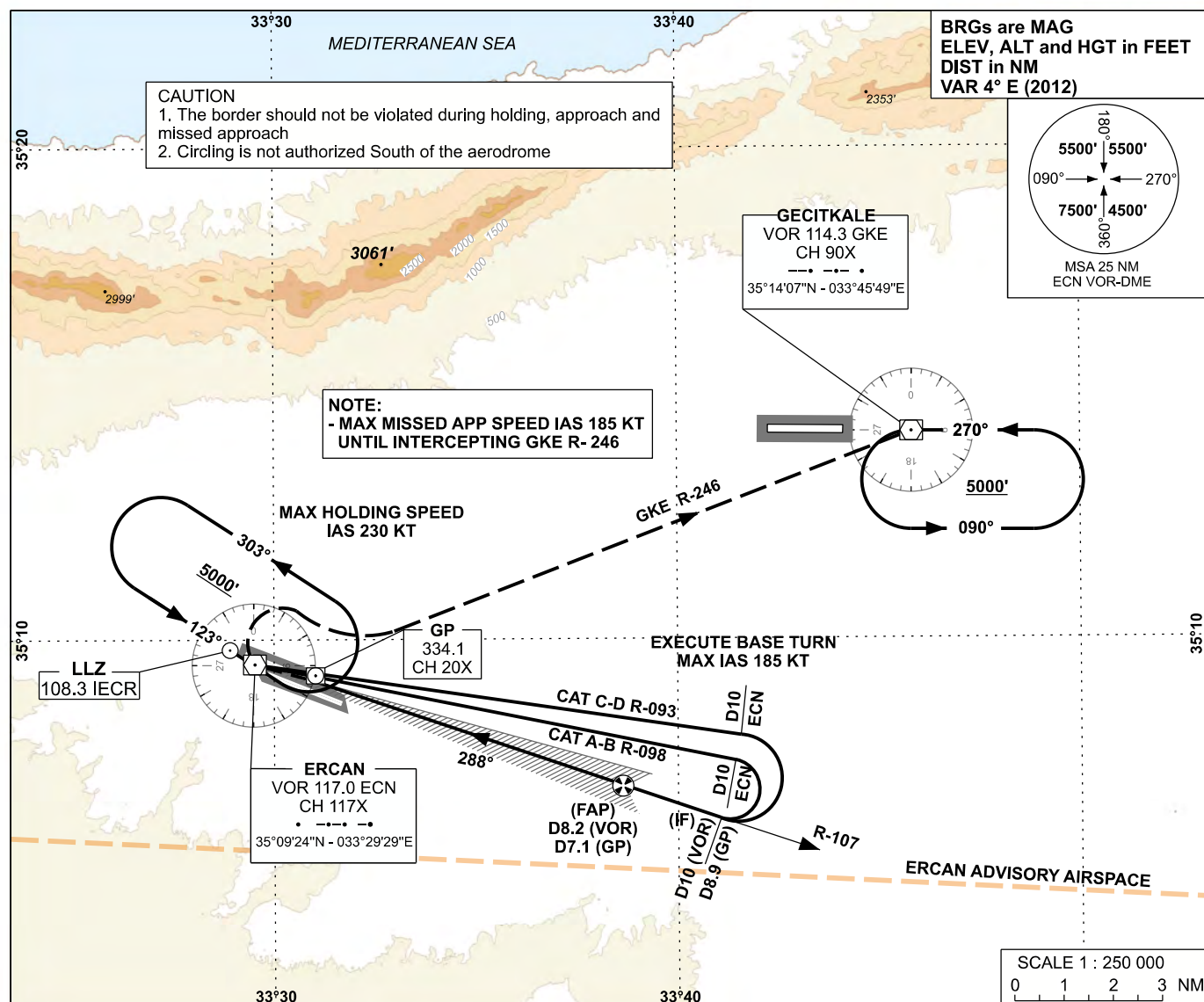


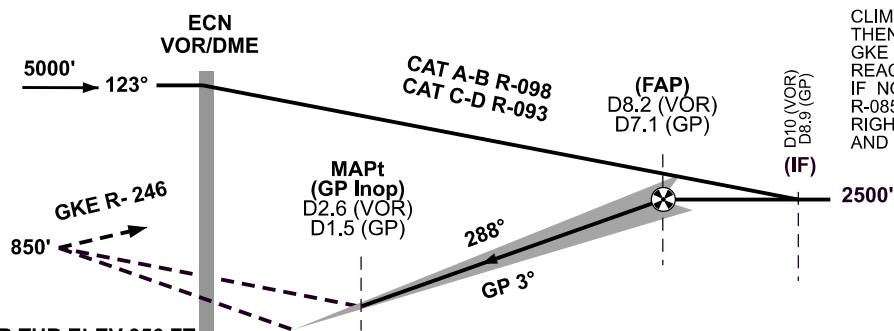
INSTRUMENT
APPROACH
CHART - ICAO

APP	127.750	AD ELEV	402 FT
TWR	120.450 - 120.250 - 120.375	TRANSITION ALTITUDE	6000 FT
ATIS	118.350		

LEFKOŞA/ERCAN
ILS/DME
RWY 29R

MISSED APPROACH

CLIMB TO 850 FT ON RWY HEADING THEN RIGHT CLIMBING PROCEED TO GKE VOR ON GKE VOR R-246. IF 5000 FT REACHED BY GKE VOR JOIN THE HOLDING. IF NOT, PROCEED CLIMBING VIA GKE VOR R-085 UNTIL CROSSING 3900 FT THEN TURN RIGHT CLIMBING 5000 FT PROCEED GKE VOR AND HOLD.



CHANGE: GKE RADIAL

NM to/from THR RWY 29R																							
OCA (H)		A		B		C		D		NOTES: - INTERCEPT GP AT 8.2 DME (VOR) 7.1 DME (GP) - ILS RDH 55 FT													
Straight-in Approach		556' (200')																					
GP Inoperative		830' (474')																					
Circling		900' (498')				1100' (698')																	